

About Us



What We Do

Cadig Inc. is dedicated to providing people effective & efficient CAD Add-ons.

Our Team

The engineers at Cadig, Inc. draw their experience with Autodesk, Inc.

We have years of experience working with AutoCAD. We understand it's limitations and provide solutions to improve your productivity.

In addition, we have partnership with architectural firms, engineering companies to ensure our products meet the requirements of the architectural, and engineering.

Company Introduction

Cadig, Inc. is established in 2003, and now it is in its first stage of development. It has about 9 employees.

With a network of strategic Independent software vendor (ISV) partners, distributors and resellers, and users in over 30 countries across the globe, Cadig is one of the world's most popular providers of professional CAD Add-ons software.

Contact

Sales Department: sales@cadig.com
Support Department: support@cadig.com
Website: <http://www.cadig.com>

We will respond your email within 1-2 business day(s).

System Requirements

CAD Platforms

- AutoCAD 2005 or higher and AutoCAD based products, such as Architectural Desktop, Map, Building System and Mechanical.
- AutoCAD LT 2009 or higher

Microsoft Excel 2000 or later

Installation and Registration

■ How to install Cadig software?

1. Quit all programs, especially AutoCAD (LT).
2. Double-click the installation application.
3. Follow the instructions on the screen.
4. After the installation, you can run AutoCAD (LT) to use it.

If you have installed other Cadig series applications, the installation application will recognize default destination path and finish installation without any instructions.

■ How to install Volume License?

Install the software on the computers based on the license number you purchased. Since only one copy of Product ID & Product Key for Volume License, so you don't need to enter different ones for each machine. Just use the same Product ID & Product Key for all computers.

■ How to upgrade from a previous version?

If you are upgrading from a previous version of Cadig products, just run the latest installation program to overwrite the old one. If it is a major upgrade, maybe you need to enter new license key. Write to support@cadig.com for your new license key (Including your old one).

■ I failed to install/load Cadig software. Why?

You must be "Administrator" to install and remove Cadig software. In Windows 2000/XP only "Power Users" & "Administrators" can use Cadig software.

■ How to register the Cadig software?

After you purchase the software, you will receive an email containing your License Certificate. The Certificate will contain your Product ID and Product Key.

The next step of the registration process is to authorize the software. This process will lock the software to an individual workstation.

To access the Registration screen:

1. On the **Cadig** menu in AutoCAD (LT), point to **AutoAttribute**, click **Register**.
2. Enter your Product ID & Product Key in the registry window Click **OK** button.
3. The application would instruct you whether your registration is successful or not.
4. If failed, take note of the following:
 - No mistype
 - Make sure of no SPACEBAR BLANKS at the beginning/end
 - Product ID/Key is case-sensitive
 - Product ID/Key is related to your CAD platforms and versions
 - Do not enter your Floating License Product ID/Key into Client software

After successful registration, all trial limitations would be immediately removed.

■ How to uninstall software?

1. Quit all programs, especially AutoCAD (LT).
2. Double-click the **Add/Remove Programs** icon in the Windows Control Panel.
3. Click **Cadig AutoAttribute** in the **Currently installed program** box, and then click the **Change/Remove** button.
4. Follow the instructions on the screen.

Or

1. Quit all programs, especially AutoCAD (LT).
 2. Double-click the installation application.
This installation application will automatically detect the corresponding application in local machine.
 3. Follow the instructions on the screen to remove the software.
- **I uninstall Cadig software. However I still get a AutoCAD (LT) Message "Menu load failed. File not found:C:\Program Files\Common Files\Cadig\Cadig2006\Cadig2006.(mnu/mns/mnc)" when I run AutoCAD (LT). How can I get rid of this?**

This message will only occur the first time that AutoCAD (LT) has been run after uninstallation has taken place.

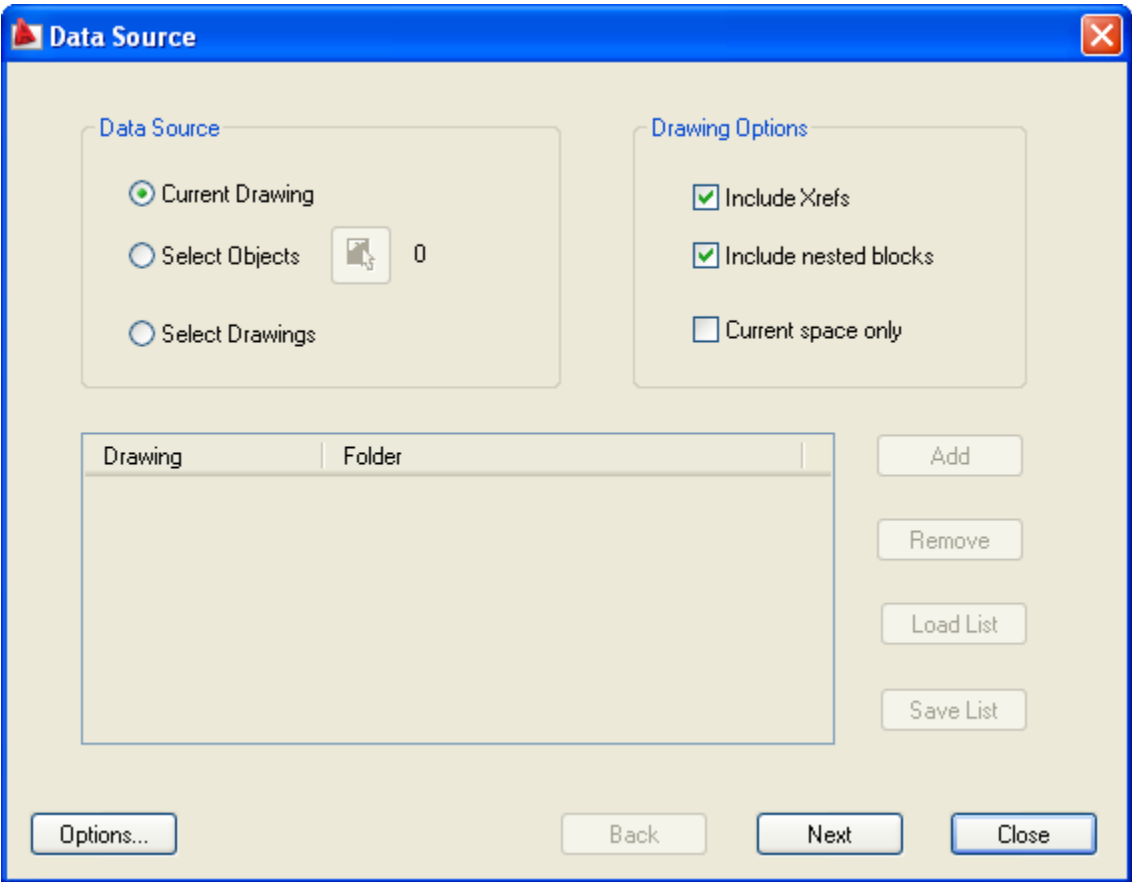
Operations

Export block attributes

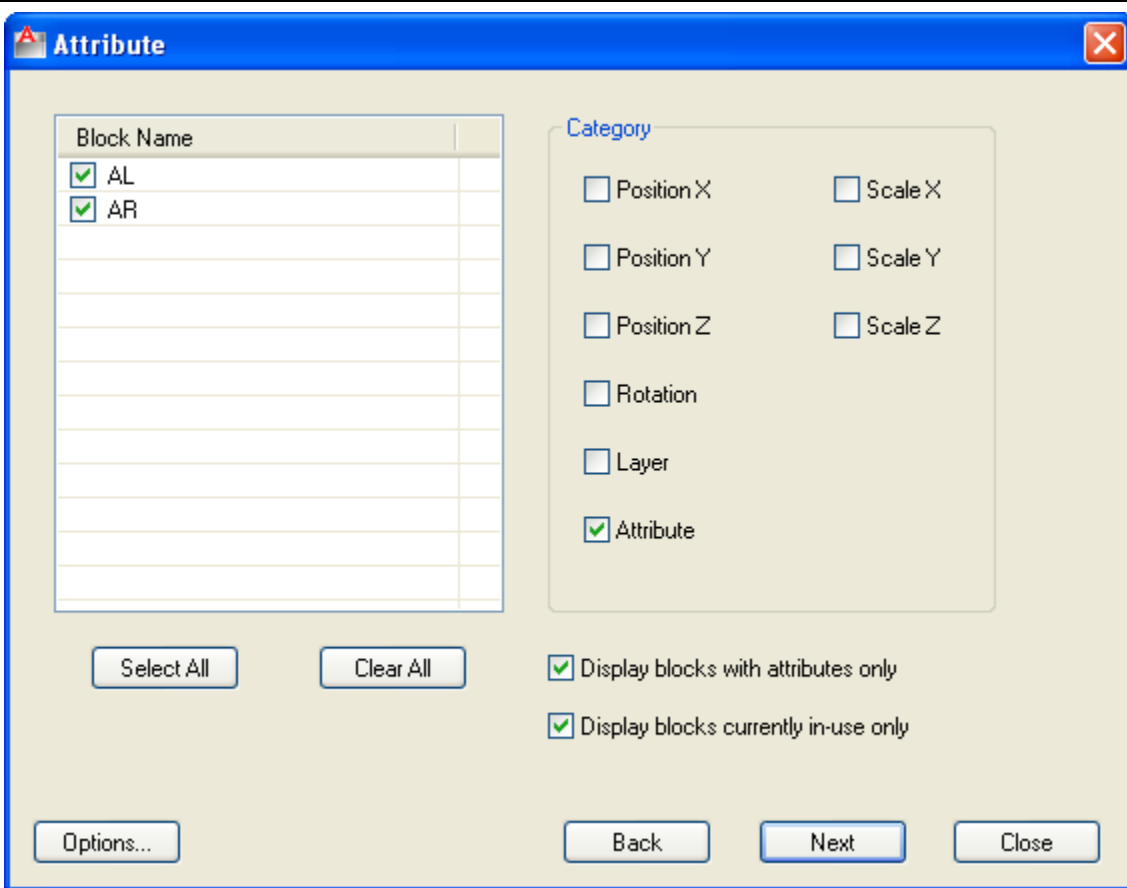
1. Click **Export Attribute**  on the **AutoAttribute** toolbar.



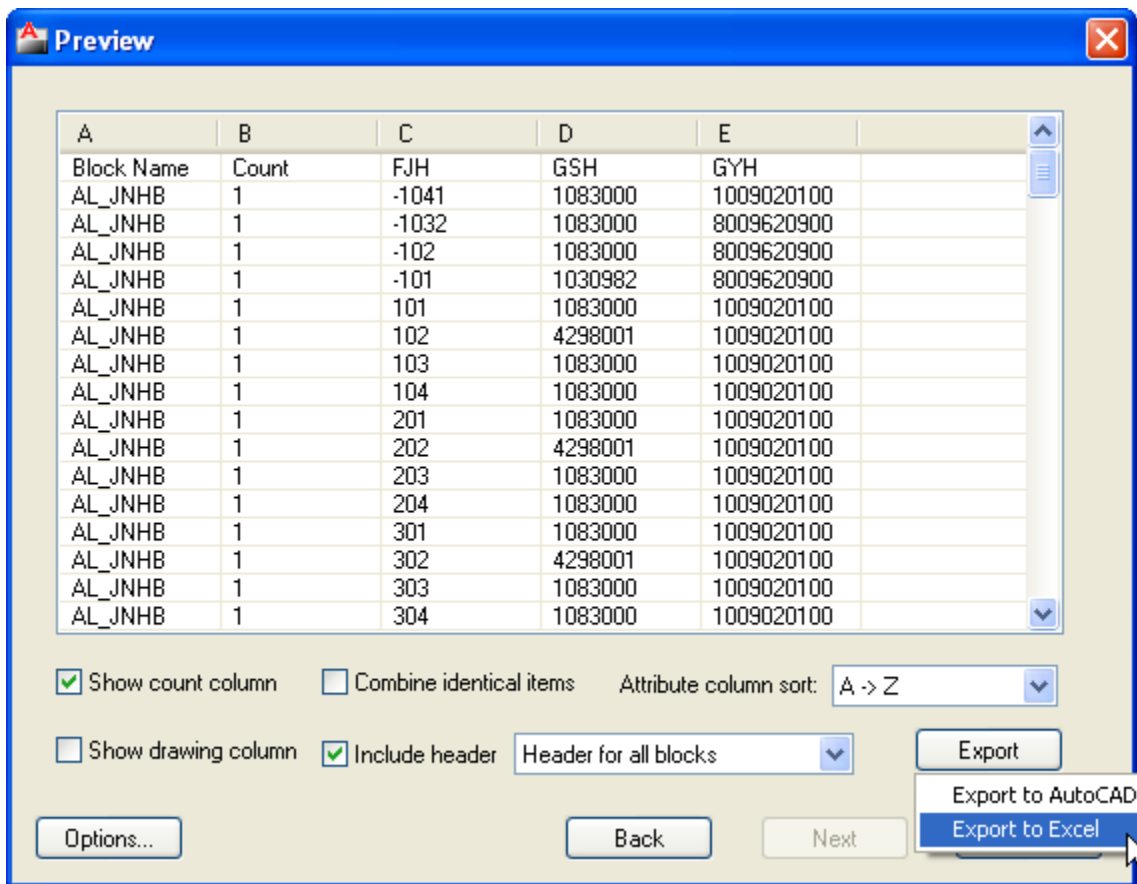
2. On the Data Source page, select the current drawing or objects to extract the attribute values. Click Next.



3. On the Attribute page, choose the blocks and the properties to export. Click Next.



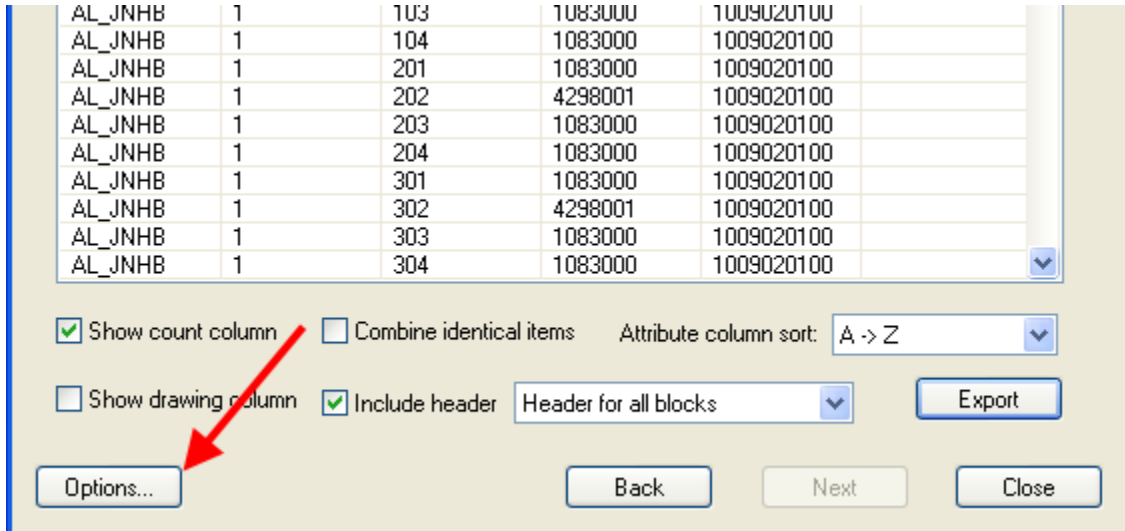
4. On the Preview page, click **Export** to export the attribute values to Excel or the AutoCAD native table.



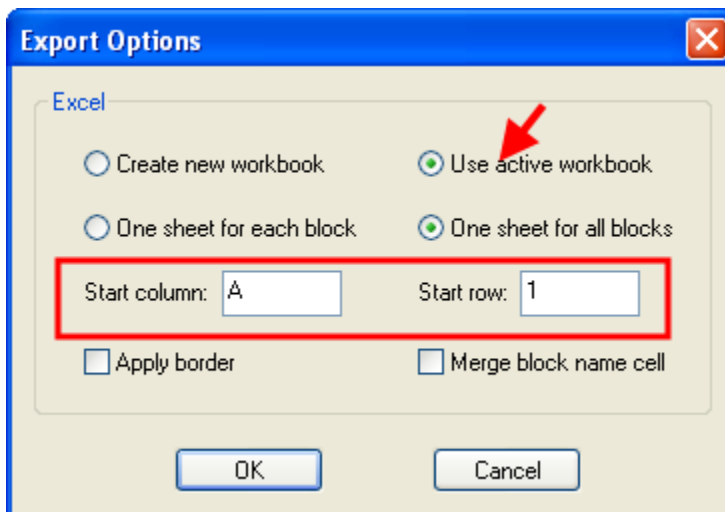
5. If you export the attribute values to Excel, the handles of the attributes are saved to the comments of the cells. So please don't delete the comments of the cells in the exported Excel file.

Export attributes to existing Excel file


1. Start Excel and open your existing Excel file.
2. Click “Options...” in the **Preview** page before exporting the attribute values.



3. Select “Use active workbook” and enter the correct start column and row.




Upload Attribute Values to Exported Workbook

1. Open the workbook exported by AutoAttribute.
2. Click **Upload to Excel**  on the **AutoAttribute** toolbar.



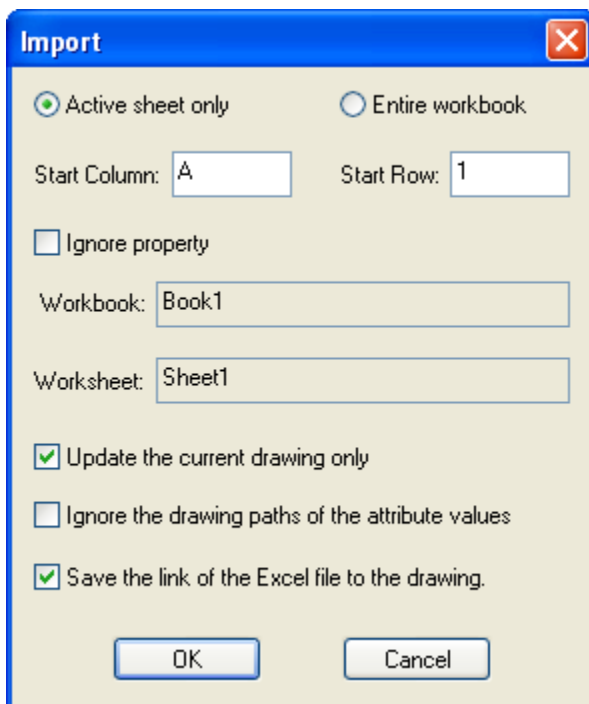
3. AutoAttribute will update the attribute values of the current drawing to the active workbook.

Import block attributes

1. Start Excel and open the output file.
2. Click **Import Attribute**  on the **AutoAttribute** toolbar.



3. Check the start row, start column, worksheet and workbook. Click **OK**.
4. If you don't want to import the properties (for example, Position X, Scale X, Rotation, Layer), please check **Ignore Property**.



5. Because the Excel workbook or worksheet maybe contains the attribute values of other drawings, please check **Update the current drawing only** if you just need to update the current drawing.
6. When exporting the attribute values, the drawing path will be written to the workbook. And when importing the modified attribute values from the exported Excel workbook, AutoAttribute will compare the written drawing path to the current drawing path so that it can confirm if the attribute values are for the current drawing.

So if you move the drawing to another folder and try to import the modified attribute values, maybe the import function doesn't work. **If the workbook or worksheet just contains the attribute values of the current drawing**, you can check **Ignore the drawing paths of the attribute values**.

Note: The **Ignore the drawing paths of the attribute values** is available only when updating the current drawing only.

7. If **Save the link of the Excel file to the drawing** is selected, the Excel file path will be saved to the drawing. If you turn on auto-update, the attribute values will be updated when the drawing is opened.

Import block attribute values by a key attribute

1. This function doesn't need the handle of the attribute. It just needs an attribute containing the unique values. You can use this function in the following cases.

- 1) You exported the values of one attribute to Excel and added the values of other attributes. Then you want to import the added values into the drawing.
- 2) Your co-worker made the values of the attributes in Excel and you want to import the values into the drawing.

2. Open the Excel file containing the attributes names and values.

3. Click **Import by Key Attribute** on the **AutoAttribute** toolbar.



Import Attribute Values by Key Attribute

Excel	Drawing																						
Workbook: <input type="text" value="D:\Demo\Book1.xlsx"/> ...	Block Name: <input type="text"/>																						
Worksheet: <input type="text" value="Sheet1"/>	Key Attribute Tag: <input type="text"/>																						
<input type="checkbox"/> Selected Rows Only	<input checked="" type="radio"/> Current Drawing <input type="radio"/> Select Drawings																						
<input type="radio"/> Header Row for Attribute Tags: <input type="text"/>	<input type="button" value="Add"/> <input type="button" value="Remove"/>																						
<input checked="" type="radio"/> Specify Columns for Attribute Tags																							
Column: <input type="text"/> Attribute Tag: <input type="text"/>																							
<input type="button" value="Add"/> <input type="button" value="Remove"/>																							
<table border="1"><thead><tr><th>Column</th><th>Attribute Tag</th></tr></thead><tbody><tr><td> </td><td> </td></tr><tr><td> </td><td> </td></tr><tr><td> </td><td> </td></tr><tr><td> </td><td> </td></tr><tr><td> </td><td> </td></tr><tr><td> </td><td> </td></tr><tr><td> </td><td> </td></tr><tr><td> </td><td> </td></tr><tr><td> </td><td> </td></tr></tbody></table>	Column	Attribute Tag																			<table border="1"><thead><tr><th>Drawing</th><th>Folder</th></tr></thead><tbody></tbody></table>	Drawing	Folder
Column	Attribute Tag																						
Drawing	Folder																						
<input type="button" value="Save Settings to File"/>	<input type="button" value="Load Settings from File"/>																						
<input type="button" value="Start"/>	<input type="button" value="Cancel"/>																						

4. Specify the header row for the tag of Attributes. The header should contain the tag and property names.

Note: if you select “Header Row for Attribute Tags”, the header row must contain the tag name of the **key attribute**.

If you don’t have a header row containing the tag and property names, you can specify the columns for the tag names one by one.

Note: if you select “Specify Columns for Attribute tags”, you must specify the column of the **key attribute**.


5. Select the block and enter the key attribute name.

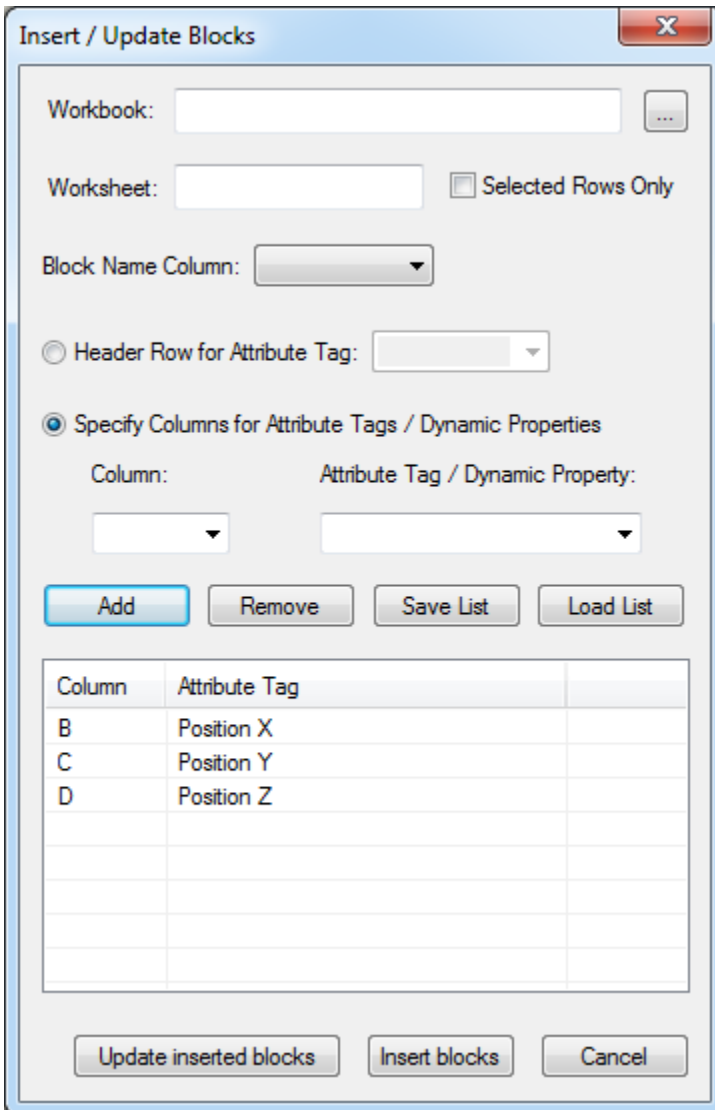
6. If you want to update multiple drawings, you can add the drawings to the drawing list.

Drawing	Folder

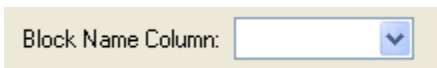
7. Click “Start”.

Insert block references from Excel

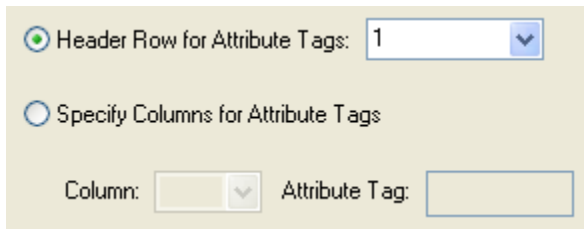
1. Open the Excel file containing the block names and the information of the block references.
2. Click **Import blocks**  on the **AutoAttribute** toolbar.



3. Specify the column for the block name.

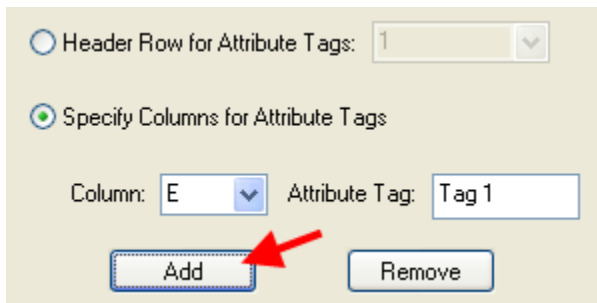


4. Specify the header row for the tag of Attributes. The header should contain the tag and property names.



The screenshot shows a configuration panel with a radio button selected for "Header Row for Attribute Tags". A dropdown menu next to it is set to "1". Below this, the "Specify Columns for Attribute Tags" radio button is unselected. At the bottom, there are two empty input fields: "Column:" and "Attribute Tag:".

If you don't have a header row containing the tag and property names, you can specify the columns for the tag names one by one.

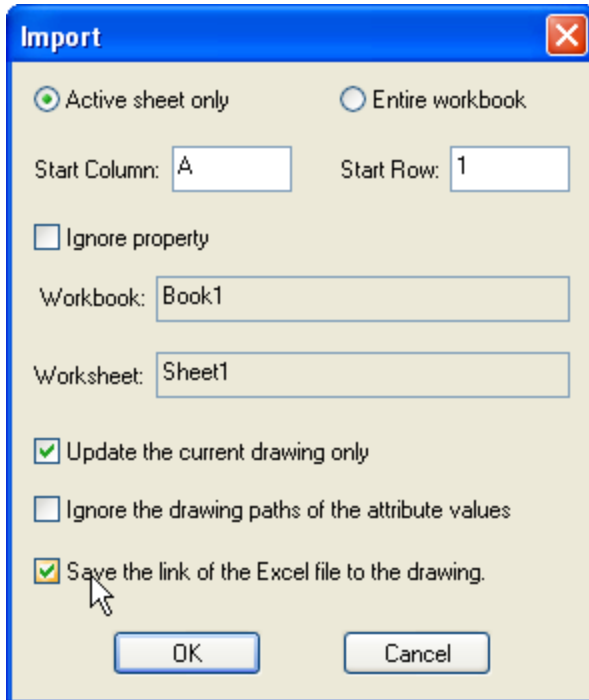


The screenshot shows the same configuration panel, but now the "Specify Columns for Attribute Tags" radio button is selected. The "Column:" dropdown is set to "E" and the "Attribute Tag:" text box contains "Tag 1". Below these fields are two buttons: "Add" and "Remove". A red arrow points to the "Add" button.

5. Click "Insert blocks" or "Update inserted blocks".

Update attributes automatically when opening drawing

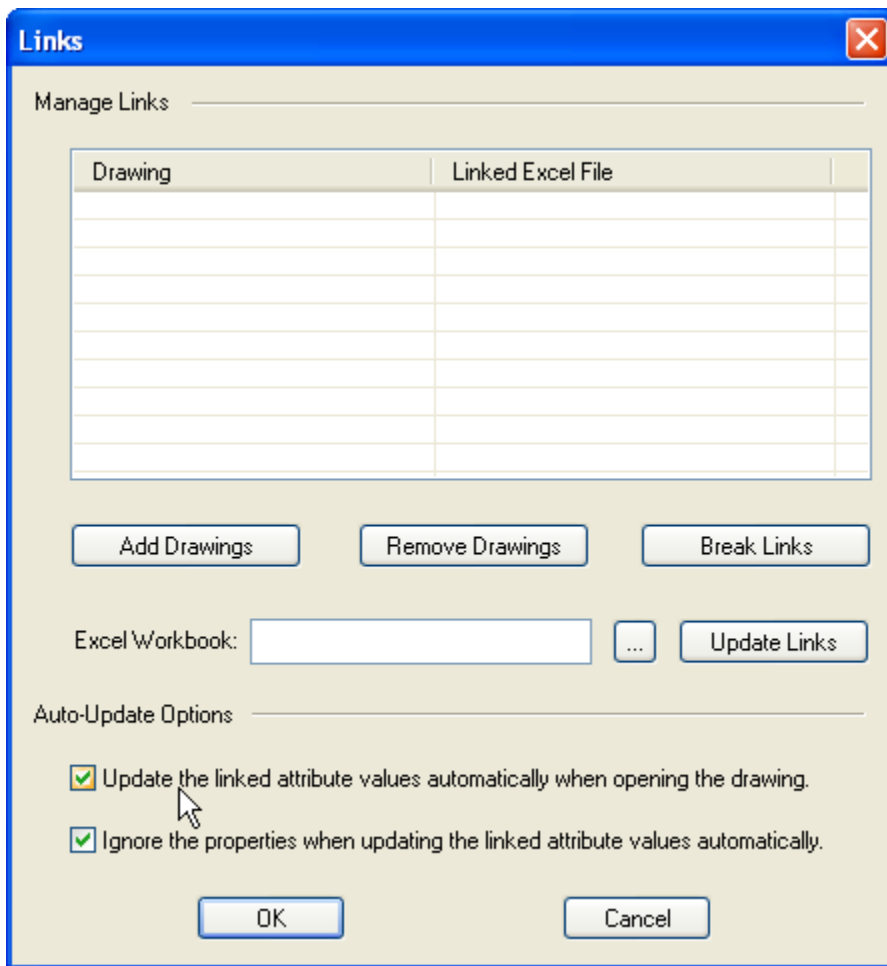
1. When importing the attribute values, please select **Save the link of the Excel file to the drawing**.




2. Click **Attribute Links**  on the **AutoAttribute** toolbar.



3. Select **Update the linked attribute values automatically when opening the drawing** in the **Auto-Update Options** section.

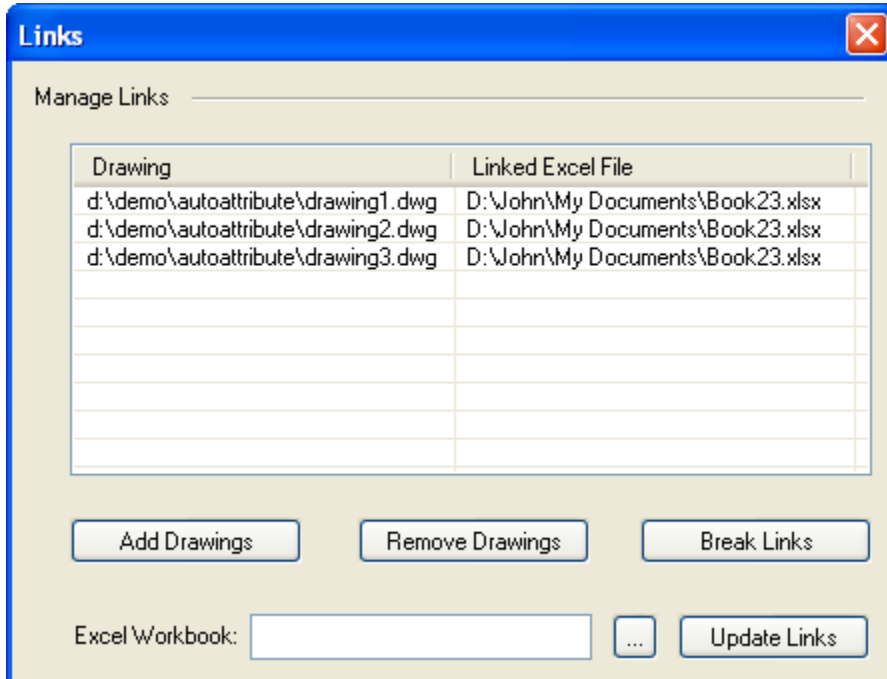


Manage the linked Excel file in the drawing

1. Click **Attribute Links**  on the **AutoAttribute** toolbar.



2. Then you can **Add Drawings** to **break** and **update** the linked Excel file in the **Manage Links** section.



Video Demo

Please go to <http://www.cadig.com/demo> for online video Demo training.

FAQ

Support

Cadig Service

Sales Department: sales@cadig.com
Support Department: support@cadig.com
Website: <http://www.cadig.com>

We will respond your email within 1-2 business day(s).

Request Software License Certificate by FAX

Fax: +1-415-532-1911 (For Software License Certificate Request Only)

Please send a fax to us to request your Software License Certificate in case you do not receive it via email within 48 hours (Maybe there is something wrong with the connection between our email servers).

Please indicate the following items in your fax:

ShareIt Ref.No.: *e.g. 11822454*
Cadig Product Name: *e.g. AutoAttribute for AutoCAD (LT)*
CAD Platform: *e.g. AutoCAD (LT) 2004/MicroStation V8.5*
License Type: *e.g. Standalone/Multi-Seat Standalone*
Number of License:
Email:
Fax:
Other Comments:

Once your order info is verified, we will fax the License Certificate to you.

share-it! Service

We choose share-it! as our e-commerce outsourcing partner. share-it! is responsible for Customer Care Center as a partner of Cadig, Inc.

If you have ordered software and would like to view your order data, or you have questions about orders, payments, or shipment by our partner share-it!, you can find answers in [Customer Care Center](#).

If you have ordered software and would like to view the status and details for all your orders, please login [My Account at Customer Care Center](#).

United States

(Language: English)

share-it!
9625 West 76th Street, Suite 150
Eden Prairie, MN 55344, USA
(Attn: A/R Department/Order)
Tel: +1.952.646.5747 (for calls from outside the U.S.)
+1.800.903.4152 (for calls from inside the U.S.)
Fax: +1.952.646.4552

Germany/Europe

(Languages: German/English/French/Italian/Spanish/Portuguese)

share-it! - element 5 AG
Vogelsanger Str. 78
50823 Cologne, Germany
(Attn: A/R Department/Order)
Phone: +49.221.31088.20
Fax: +49.221.31088.29